

**CORRECTIVE ORDINANCE NO. 23-27 (fka 22-73)**  
**EAST RIVER RANCH**  
**LARGE-SCALE COMPREHENSIVE PLAN MAP AMENDMENT**  
**PLN2203-0167**

AN ORDINANCE OF THE BOARD OF COUNTY COMMISSIONERS OF MANATEE COUNTY, FLORIDA, REGARDING COMPREHENSIVE PLANNING, AMENDING MANATEE COUNTY ORDINANCE NO. 89-01, AS AMENDED (THE MANATEE COUNTY COMPREHENSIVE PLAN); PROVIDING A PURPOSE AND INTENT; PROVIDING FINDINGS; PROVIDING FOR A PRIVATELY-INITIATED MAP AMENDMENT TO THE FUTURE LAND USE MAP OF THE FUTURE LAND USE ELEMENT TO DESIGNATE 1,381.63± ACRES OF SPECIFIC REAL PROPERTY GENERALLY LOCATED 8,650± FEET EAST OF BOURNESIDE BOULEVARD, NORTH OF 61<sup>ST</sup> AVENUE EAST, SOUTH OF STATE ROAD 64 EAST, AND WEST OF CR 675, AND COMMONLY KNOWN AS 21300 STATE ROAD 64 EAST, BRADENTON (MANATEE COUNTY) FROM AG/R (AGRICULTURE/RURAL - 1 DU/5 AC) TO THE UF-3 (URBAN FRINGE - 3 DU/AC) FUTURE LAND USE CLASSIFICATION; PROVIDING FOR SEVERABILITY AND PROVIDING AN EFFECTIVE DATE.

**BE IT ORDAINED** by the Board of County Commissioners of Manatee County:

**Section 1. Purpose and Intent.** This Ordinance is enacted to carry out the purpose and intent of, and exercise the authority set out in, the Community Planning Act, Part II of Chapter 163, Florida Statutes, and Chapter 125, Florida Statutes, as amended.

**Section 2. Findings.** The Board of County Commissioners relies upon the following findings in the adoption of this Ordinance:

1. Chapter 125, Florida Statutes empowers the Board of County Commissioners of the County of Manatee to prepare and enforce comprehensive plans for the development of the county; and,
2. The Community Planning Act (the "Act") is codified in the applicable portions of Chapter 163, Part II, Florida Statutes (2022) as amended, empowers and requires the County (a) to plan for the county's future development and growth, and (b) to adopt and amend comprehensive plans, or elements or portions thereof, to guide the future growth and development of the county; and,
3. Manatee County Ordinance No. 89-01, as amended, was adopted pursuant to general law for the purpose of providing a framework for land use and development in the unincorporated area of Manatee County, and established the Manatee County Comprehensive Plan; and,
4. Application PA-22-10 is a Privately-Initiated Comprehensive Plan Map Amendment to the Future Land Use Map Series of the Future Land Use Element to change the Future Land Use Classification for specific real property from AG/R (Agriculture/Rural – 1 DU / 5 AC) to the UF-3 (Urban Fringe – 3 DU/AC) Future Land Use Classification (1,381.63± acres).
5. On February 9, 2023, at a duly noticed public hearing, the Manatee County Planning Commission, as the County's Local Planning Agency for purposes of the Act, considered Application PA-22-10, found the application consistent with the Comprehensive Plan; and passed a motion to recommend transmittal of Plan Amendment 22-10 to the Board of County Commissioners; and,

6. Pursuant to Section 163.3187, Florida Statutes (2022), the Board of County Commissioners received and considered the recommendation of the Manatee County Planning Commission, and held a public hearing on February 16, 2023, to consider Plan Amendment PA-22-10 and the transmittal of the proposed amendment to the State Land Planning Agency in accordance with the Act; and,
7. The Florida Department of Economic Opportunity (DEO), by a letter dated April 21, 2023, did not identify any comments related to adverse impacts to important state resources and facilities.
8. Southwest Florida Water Management District by a letter dated March 15, 2023, did not identify any comments related to adverse impacts to the proposed amendment.
9. The Florida Department of Environmental Protection by communication dated March 23, 2023, did not identify any potential adverse impacts to important state resources or facilities related to air and water pollution; wetlands and other surface waters of the state; Federal and state-owned lands and interest lands, state parks, greenways, conservation easements; solid waste; water and wastewater treatment.
10. The Florida Department of Agriculture and Consumer Services by a letter dated March 16, 2023, did not identify any potential adverse impacts to important state resources or facilities related to agricultural, aquacultural, or forestry resources if amendment is adopted.
11. The Florida Fish and Wildlife Conservation Commission (FWC) by a letter dated March 31, 2023, while there are no objections to the amendment, the following technical assistance information regarding potentially affected resources is provided to assist the Department of Economic Opportunity, the County, and any applicants during the amendment review and future project planning. For further detail reference the Objections, Recommendations and Comments (“ORC”) Report.
12. The Tampa Bay Regional Planning Council (TBRPC), through a summary report dated March 2, 2023, did not identify any comments or objections.
13. The Florida Department of Transportation by letter dated April 13, 2023, stated no objection to the proposed amendment; however, did provide technical assistance comments regarding adverse impacts to transportation resources and facilities of state importance.
14. The Board of County Commissioners further considered all oral and written comments received during said public hearings the recommendations of the Planning Commission, the comments of the State Land Planning Agency and all applicable State or local review agencies and found the proposed amendments consistent with the Comprehensive Plan; and,
15. Pursuant to Section 163.3187, Florida Statutes (2022), on ~~May~~ May 24, 2023, the Board of County Commissioners held an adoption public hearing, with due public notice having been provided, to consider said proposed amendment to the Comprehensive Plan; and,

16. All applicable requirements of general law and local law have been followed, and the proceedings have been conducted pursuant to Chapter 163, Part II, Florida Statutes (2022), and the Plan Format and Administration Section of the Manatee County Comprehensive Plan.

**Section 3. Map Amendment:** The Manatee County Comprehensive Plan is hereby amended to change the Future Land Use Classification of the property, described on Exhibit “A” hereto which is incorporated herein by reference from AG/R (Agriculture/Rural – 1 DU / 5 AC) to the UF-3 (Urban Fringe – 3 DU/AC) Future Land Use Classification (1,381.63± acres) Future Land Use Map “Exhibit “B”. Such change shall be incorporated into the Future Land Use Map established and adopted as part of the County’s Comprehensive Plan, as amended.

**Section 4. Codification.** The publisher of the County’s Land Development Code, the Municipal Code Corporation, is directed to incorporate the amendments in Section 3 of this Ordinance into the Land Development Code.

**Section 5. Applicability.** The amendments set forth in this Ordinance shall apply to all applications, decisions or controversies pending before the County upon the effective date hereof or filed or initiated thereafter.

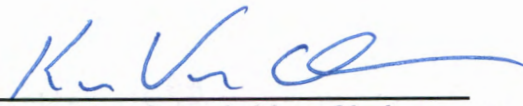
**Section 6. Severability.** If any section, sentence, clause, or other provision of this Ordinance shall be held to be invalid or unconstitutional by a court of competent jurisdiction, such invalidity or unconstitutionality shall not be construed as to render invalid or unconstitutional the remaining sections, sentences, clauses, or provisions of this Ordinance.

**Section 7. Effective Date.** This Ordinance shall become effective as provided by law.


**PASSED AND DULY ADOPTED**, in open session, with a quorum present and voting this 24<sup>th</sup> day of May 2023 and as amended on the 25 day of July 2023.



**BOARD OF COUNTY COMMISSIONERS OF  
MANATEE COUNTY, FLORIDA**

By:   
**Kevin Van Ostenbridge, Chairperson**

**ATTEST: ANGELINA COLONNESO  
Clerk of the Circuit Court**

By:   
**Deputy Clerk**

**Exhibit “A”**

COMMENCE AT THE NORTHEAST CORNER OF SECTION 5, TOWNSHIP 35 SOUTH, RANGE 20 EAST; THENCE S00°45'25"W, ALONG THE EAST LINE OF SAID SECTION 5, A DISTANCE OF 1279.85 FEET TO THE POINT OF BEGINNING; THENCE CONTINUE S00°45'25"W, ALONG SAID EAST LINE, A DISTANCE OF 113.73 FEET TO THE NORTHEAST CORNER OF THE SOUTHEAST 1/4 OF THE NORTHEAST 1/4 OF SAID SECTION 5; THENCE S00°22'19"W, ALONG SAID EAST LINE, A DISTANCE OF 1338.59 FEET TO THE NORTHEAST CORNER OF THE SOUTHEAST 1/4 OF SAID SECTION 5; THENCE S00°32'45"W, ALONG SAID EAST LINE, A DISTANCE OF 659.91 FEET; THENCE S88°53'22"E, A DISTANCE OF 1328.65 FEET; THENCE S00°52'42"W, A DISTANCE OF 988.68 FEET; THENCE S88°56'20"E, A DISTANCE OF 15.00 FEET; THENCE S00°52'42"W, A DISTANCE OF 988.66 FEET TO A POINT ON THE SOUTH LINE OF SECTION 4, TOWNSHIP 35 SOUTH, RANGE 20 EAST; THENCE N88°59'20"W, ALONG SAID SOUTH LINE, A DISTANCE OF 1332.15 FEET TO THE NORTHEAST CORNER OF SECTION 8, TOWNSHIP 35 SOUTH, RANGE 20 EAST; THENCE S01°02'12"W, ALONG THE EAST LINE OF SAID SECTION 8, A DISTANCE OF 1642.39 FEET; THENCE S88°53'42"E, A DISTANCE OF 152.29 FEET; THENCE S01°03'10"W, A DISTANCE OF 327.93 FEET; THENCE S88°52'35"E, A DISTANCE OF 2517.79 FEET TO A POINT ON THE WEST LINE OF THE NORTHEAST 1/4 OF SECTION 9, TOWNSHIP 35 SOUTH, RANGE 20 EAST; THENCE N00°52'19"E, ALONG THE WEST LINE OF SAID NORTHEAST 1/4, A DISTANCE OF 328.41 FEET; THENCE S88°53'42"E, A DISTANCE OF 1334.27 FEET; THENCE S00°47'17"W, A DISTANCE OF 123.92 FEET TO THE CENTERLINE OF A CREEK; THENCE ALONG SAID CENTERLINE THE FOLLOWING EIGHT (8) COURSES: (1) S89°15'06"E, A DISTANCE OF 60.71 FEET; (2) S81°26'25"E, A DISTANCE OF 98.74 FEET; (3) S30°23'02"E, A DISTANCE OF 76.31 FEET; (4) S36°08'28"E, A DISTANCE OF 117.55 FEET; (5) S69°28'29"E, A DISTANCE OF 108.56 FEET; (6) N88°30'54"E, A DISTANCE OF 70.51 FEET; (7) S18°26'07"E, A DISTANCE OF 80.55 FEET; (8) S56°36'04"E, A DISTANCE OF 75.53 FEET; THENCE LEAVING SAID CREEK CENTERLINE, S88°52'35"E, A DISTANCE OF 755.46 FEET TO A POINT ON THE WEST RIGHT-OF-WAY LINE OF COUNTY ROAD 675; THENCE S00°42'15"W, ALONG SAID WEST RIGHT-OF-WAY LINE, A DISTANCE OF 545.86 FEET TO A POINT ON THE NORTH LINE OF THE SOUTHEAST 1/4 OF SAID SECTION 9; THENCE N88°49'47"W, ALONG SAID NORTH LINE, A DISTANCE OF 102.00 FEET; THENCE S00°42'31"W, A DISTANCE OF 329.38 FEET; THENCE N88°49'47"W, A DISTANCE OF 3631.22 FEET; THENCE S00°57'22"W, A DISTANCE OF 1315.02 FEET; THENCE N88°43'31"W, A DISTANCE OF 495.13 FEET; THENCE S01°02'12"W, A DISTANCE OF 1645.42 FEET; THENCE N88°42'18"W, A DISTANCE OF 136.60 FEET; THENCE S00°46'45"W, A DISTANCE OF 660.29 FEET; THENCE S88°45'53"E, A DISTANCE OF 406.28 FEET; THENCE S88°44'25"E, A DISTANCE OF 1338.79 FEET; THENCE S00°58'21"W, A DISTANCE OF 390.05 FEET; THENCE S88°44'34"E, A DISTANCE OF 166.52 FEET TO A POINT ON A CURVE CONCAVE NORTHWESTERLY, HAVING A RADIUS OF 1000.00 FEET, A CENTRAL ANGLE OF 28°12'01", A CHORD BEARING OF N77°09'25"E AND A CHORD DISTANCE OF 487.23 FEET; THENCE NORTHEASTERLY ALONG THE ARC OF SAID CURVE 492.19 FEET; THENCE N63°03'25"E, A DISTANCE OF 1646.21 FEET TO A POINT ON A CURVE CONCAVE SOUTHEASTERLY, HAVING A RADIUS OF 500.00 FEET, A CENTRAL ANGLE OF 28°14'17", A CHORD BEARING OF N77°10'34"E AND A CHORD DISTANCE OF 243.94 FEET; THENCE NORTHEASTERLY ALONG THE ARC OF SAID CURVE 246.42 FEET; THENCE S88°42'36"E, A DISTANCE OF 301.17 FEET TO A POINT ON THE WEST RIGHT-OF-WAY LINE OF COUNTY ROAD 675; THENCE S00°00'52"E, ALONG SAID WEST RIGHT-OF-WAY LINE, A DISTANCE OF 80.40 FEET; THENCE N88°47'29"W, LEAVING SAID WEST RIGHT-OF-WAY LINE, A DISTANCE OF

100.00 FEET; THENCE S00°42'38"W, A DISTANCE OF 737.03 FEET; THENCE S88°47'29"E, A DISTANCE OF 100.00 FEET TO A POINT ON THE WEST RIGHT-OF-WAY LINE OF SAID COUNTY ROAD 675; THENCE S00°42'38"W, ALONG SAID WEST RIGHT-OF-WAY LINE, A DISTANCE OF 60.00 FEET; THENCE N88°47'29"W, LEAVING SAID WEST RIGHT-OF-WAY LINE, A DISTANCE OF 100.00 FEET; THENCE S00°42'38"W, A DISTANCE OF 753.03 FEET; THENCE S88°47'29"E, A DISTANCE OF 100.00 FEET TO A POINT ON THE WEST RIGHT-OF-WAY LINE OF SAID COUNTY ROAD 675; THENCE S00°42'38"W, ALONG SAID WEST RIGHT-OF-WAY LINE, A DISTANCE OF 100.00 FEET; THENCE N88°47'29"W, LEAVING SAID WEST RIGHT-OF-WAY LINE, A DISTANCE OF 100.00 FEET; THENCE S00°42'38"W, A DISTANCE OF 151.21 FEET TO A POINT ON THE SOUTH LINE OF THE NORTHEAST 1/4 OF SECTION 16; THENCE N88°47'29"W, ALONG SAID SOUTH LINE, A DISTANCE OF 2540.81 FEET TO THE CENTER OF SAID SECTION 16; THENCE CONTINUE N88°47'29"W, ALONG THE SOUTH LINE OF THE NORTHWEST 1/4 OF SAID SECTION 16, A DISTANCE OF 2675.68 FEET TO THE SOUTHWEST CORNER OF THE NORTHWEST 1/4 OF SAID SECTION 16; THENCE N88°56'55"W, A DISTANCE OF 1339.54 FEET; THENCE S00°52'29"W, A DISTANCE OF 2638.64 FEET TO A POINT ON THE SOUTH LINE OF SECTION 17, TOWNSHIP 35 SOUTH, RANGE 20 EAST; THENCE N88°50'38"W ALONG THE SOUTH LINE OF SAID SECTION 17, A DISTANCE OF 1342.56 FEET TO THE SOUTHWEST CORNER OF THE SOUTHEAST 1/4 OF SAID SECTION 17, BEING A FOUND 4"X4" CONCRETE MONUMENT PER CERTIFIED CORNER RECORD NUMBER 112939; THENCE N00°56'25"E ALONG THE WEST LINE OF SAID SOUTHEAST 1/4, A DISTANCE OF 3295.17 FEET TO THE SOUTHWEST CORNER OF TRACT 38, WATERBURY GRAPEFRUIT TRACTS, AS RECORDED IN PLAT BOOK 2, PAGE 37, PUBLIC RECORDS OF MANATEE COUNTY, FLORIDA; THENCE S88°58'33"E ALONG THE SOUTH LINE OF SAID TRACT 38, A DISTANCE OF 1338.95 FEET TO THE SOUTHEAST CORNER OF SAID TRACT 38; THENCE N00°53'21"E ALONG THE EAST LINE OF SAID TRACT 38, A DISTANCE OF 329.78 FEET TO THE NORTHEAST CORNER OF SAID TRACT 38; THENCE N88°59'13"W ALONG THE NORTH LINE OF SAID TRACT 38, A DISTANCE OF 1338.65 FEET TO THE NORTHWEST CORNER OF SAID TRACT 38, SAID CORNER ALSO LYING ON THE EAST LINE OF THE NORTHWEST 1/4 OF SAID SECTION 17; THENCE N00°56'25"E ALONG SAID EAST LINE, A DISTANCE OF 1318.07 FEET TO THE SOUTHEAST CORNER OF TRACT 32 OF SAID WATERBURY GRAPEFRUIT TRACTS; THENCE N89°02'21"W ALONG THE SOUTH LINE OF TRACT 32 AND TRACT 1 OF SAID WATERBURY GRAPEFRUIT TRACTS, A DISTANCE OF 2674.78 FEET TO THE SOUTHWEST CORNER OF TRACT 1 OF SAID WATERBURY GRAPEFRUIT TRACTS IN SECTION 17, ALSO BEING ON THE WEST LINE OF SECTION 17, TOWNSHIP 35 SOUTH, RANGE 20 EAST; THENCE N01°03'37"E ALONG SAID WEST LINE OF THE NORTHWEST 1/4 OF SECTION 17, A DISTANCE OF 328.91 FEET TO THE SOUTHWEST CORNER OF SECTION 8, TOWNSHIP 35 SOUTH, RANGE 20 EAST, BEING A FOUND 1/2" IRON PIPE WITH NO IDENTIFICATION CAP, PER CERTIFIED CORNER RECORD NUMBER 112943; THENCE N00°59'04"E ALONG THE WEST LINE OF THE SOUTHWEST 1/4 OF SAID SECTION 8, A DISTANCE OF 2632.06 FEET TO THE NORTHWEST CORNER OF THE SOUTHWEST 1/4 OF SAID SECTION 8, BEING A FOUND 5/8" IRON ROD AND CAP STAMPED "LB 7866"; THENCE S88°59'45"E ALONG THE NORTH LINE OF SAID SOUTHWEST 1/4, A DISTANCE OF 2675.39 FEET TO THE SOUTHWEST CORNER OF TRACT 40 OF THE AFOREMENTIONED WATERBURY GRAPEFRUIT TRACTS, SAID LINE ALSO BEING THE CENTER OF SAID SECTION 8; THENCE N01°00'46"E ALONG THE WEST LINE OF THE NORTHEAST 1/4 OF SAID SECTION 8, A DISTANCE OF 2640.98 FEET TO THE SOUTHWEST CORNER OF THE SOUTHEAST 1/4 OF SECTION 5, TOWNSHIP 35 SOUTH, RANGE 20 EAST; THENCE N00°46'37"E ALONG THE WEST LINE OF THE SOUTHEAST 1/4 OF SAID SECTION 5, A DISTANCE OF 1326.93 FEET

TO THE NORTHWEST CORNER OF TRACT 45 IN SECTION 5 OF SAID WATERBURY GRAPEFRUIT TRACTS; THENCE S88°32'30"E ALONG THE NORTH LINE OF SAID TRACT 45 AND TRACT 52, A DISTANCE OF 2671.35 FEET; TO A POINT ON THE EAST LINE OF THE SOUTHEAST 1/4 OF SAID SECTION 5, SAID POINT ALSO BEING THE NORTHEAST CORNER OF TRACT 52 OF SAID WATERBURY GRAPEFRUIT TRACTS; THENCE N00°32'45"E ALONG SAID EAST LINE, A DISTANCE OF 659.91 FEET; THENCE N88°27'18"W, A DISTANCE OF 1334.37 FEET; THENCE N00°46'47"E, A DISTANCE OF 661.44 FEET TO A FOUND 5/8 INCH IRON ROD WITH NO IDENTIFICATION CAP, BEING ON THE SOUTH LINE OF THE NORTHEAST 1/4 OF SAID SECTION 5; THENCE N88°23'14"W ALONG SAID SOUTH LINE, A DISTANCE OF 246.14 FEET; THENCE N00°48'24"E, 2585.94 FEET TO A POINT ON THE SOUTH RIGHT-OF-WAY LINE OF STATE ROAD 64 PER FLORIDA DEPARTMENT RIGHT-OF-WAY MAP SECTION 1305-250; THENCE S88°16'14"E ALONG SAID SOUTH RIGHT-OF-WAY LINE, A DISTANCE OF 450.68 FEET; THENCE LEAVING SAID SOUTH RIGHT-OF-WAY LINE S01°03'06"E, A DISTANCE OF 210.91 FEET; THENCE S89°15'05"E, A DISTANCE OF 209.18 FEET; THENCE S00°14'43"W, A DISTANCE OF 725.30 FEET; THENCE N89°04'55"W, A DISTANCE OF 206.51 FEET; THENCE S00°48'34"W, A DISTANCE OF 211.00 FEET; THENCE S89°04'55"E, A DISTANCE OF 1100.20 FEET TO THE POINT OF BEGINNING.

CONTAINING 59,307,393 SQUARE FEET OF 1,361.5104 ACRES.

TOGETHER WITH;

TRACTS 1 AND 2 OF SECTION 9, TOWNSHIP 35 SOUTH, RANGE 20 EAST, IN WATERBURY GRAPEFRUIT TRACTS, ACCORDING TO THE PLAT THEREOF RECORDED IN PLAT BOOK 2, PAGE 37, OF THE PUBLIC RECORDS OF MANATEE COUNTY, FLORIDA.

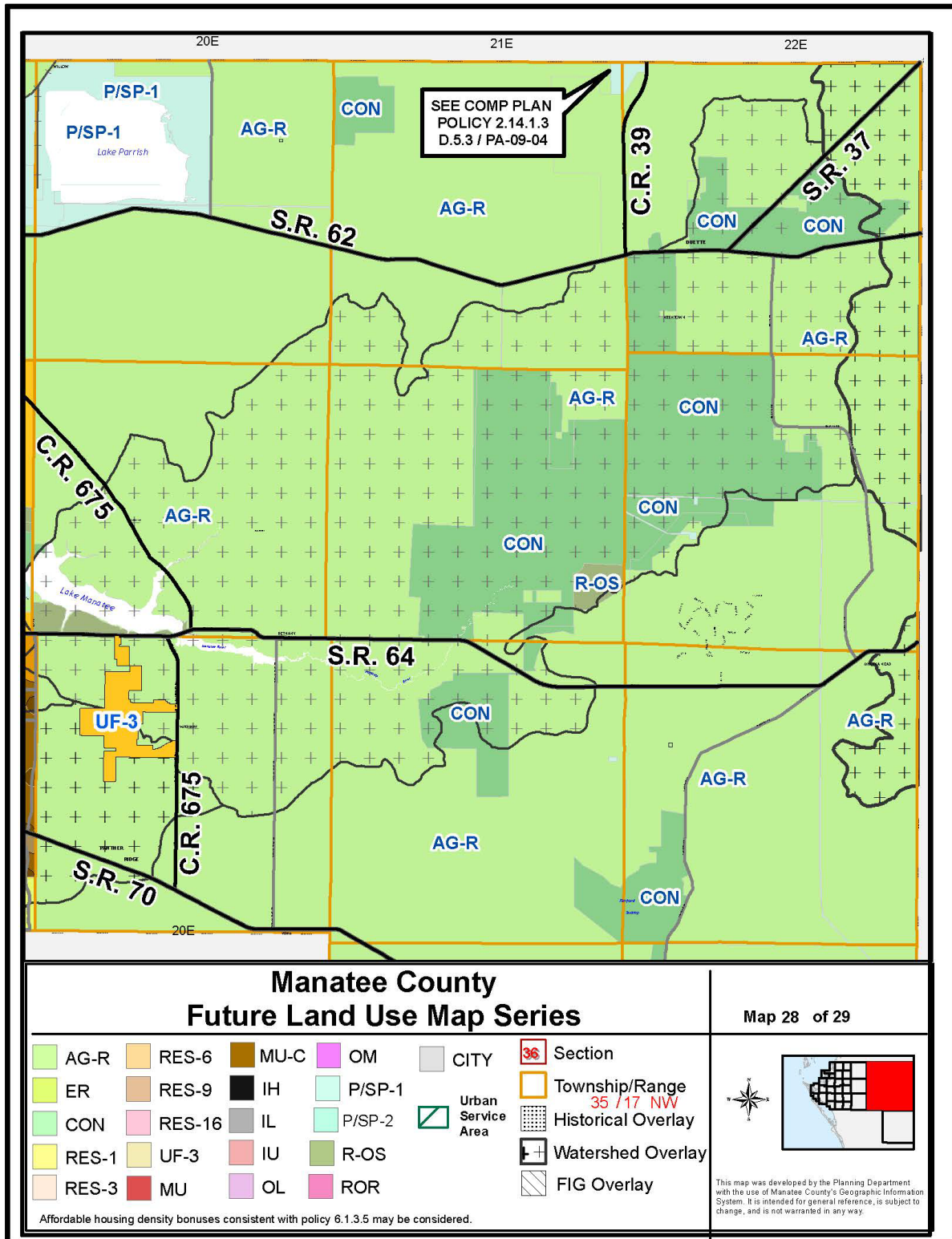
ALL OF THE ABOVE BEING MORE PARTICULARLY DESCRIBED AS FOLLOWS: (AS-SURVEYED LEGAL DESCRIPTION)

COMMENCE AT THE NORTHEAST CORNER OF SECTION 9, TOWNSHIP 35 SOUTH, RANGE 20 EAST; THENCE N88°59'20"W, ALONG THE NORTH LINE OF SAID SECTION 9, A DISTANCE OF 3,995.81 FEET TO THE POINT OF BEGINNING. THENCE S00°58'18"W, A DISTANCE OF 658.21 FEET; THENCE N88°56'07"W, A DISTANCE OF 1332.91 FEET TO A POINT ON THE WEST LINE OF SAID SECTION 9; THENCE N01°02'12"E, ALONG THE WEST LINE OF SAID SECTION 9, A DISTANCE OF 656.95 FEET; THENCE S88°59'20"E, A DISTANCE OF 1,332.15 FEET TO THE POINT OF BEGINNING.

CONTAINING 876,255 SQUARE FEET OR 20.12 ACRES, MORE OR LESS.

BEING SUBJECT TO ANY RIGHTS-OF-WAY, RESTRICTIONS AND EASEMENTS OF RECORDS

### Exhibit “B”





## FLORIDA DEPARTMENT *of* STATE

**RON DESANTIS**  
Governor

**CORD BYRD**  
Secretary of State

July 31, 2023

Honorable Angelina Colonnese  
Clerk of the Circuit Court  
Manatee County  
Post Office Box 25400  
Bradenton, FL 34206

Attention: Vicki Tessmer

Dear Honorable Angelina Colonnese:

Pursuant to the provisions of Section 125.66, Florida Statutes, this will acknowledge receipt of your electronic copy of corrected Manatee County Ordinance No. 23-27, which was filed in this office on July 31, 2023.

Sincerely,

Anya Owens  
Administrative Code and Register Director

ACO/wlh

**From:** [ords@municode.com](mailto:ords@municode.com)  
**To:** [Vicki Tessmer](#); [bill.oshea@mymanatee.org](mailto:bill.oshea@mymanatee.org)  
**Subject:** Manatee County, FL Comprehensive Plan - 2017 (15530) Supplement 11  
**Date:** Monday, March 11, 2024 6:19:21 AM

---

[**NOTICE:** This message originated outside of Manatee County Clerk's Office -- **DO NOT CLICK** on **links** or open **attachments** unless you are sure the content is safe.]

\*\*\*\*THIS IS AN AUTOMATICALLY GENERATED EMAIL\*\*\*\*

Below, you will find the material that we have received/recorded to your account. This material is being considered for inclusion in your next/current update, Supplement 11

Document	Adopted Date	Recorded	Recorded Format
<a href="#">Ordinance No. 23-122</a>	<a href="#">12/7/2023</a>	<a href="#">3/11/2024</a>	Word
<a href="#">Ordinance No. 23-22</a>	<a href="#">8/24/2023</a>	<a href="#">9/5/2023</a>	Word
<a href="#">Ordinance No. 23-26</a>	<a href="#">6/15/2023</a>	<a href="#">11/2/2023</a>	Word
<a href="#">Ordinance No. 23-27</a>	<a href="#">3/24/2023</a>	<a href="#">11/2/2023</a>	Word
<a href="#">Ordinance No. 23-28</a>	<a href="#">5/24/2023</a>	<a href="#">6/7/2023</a>	Word
<a href="#">Ordinance No. 23-29</a>	<a href="#">5/24/2023</a>	<a href="#">6/7/2023</a>	Word
<a href="#">Ordinance No. 23-36</a>	<a href="#">8/24/2023</a>	<a href="#">9/5/2023</a>	Word
<a href="#">Ordinance No. 23-37</a>	<a href="#">8/24/2023</a>	<a href="#">9/5/2023</a>	Word
<a href="#">Ordinance No. 23-38</a>	<a href="#">8/24/2023</a>	<a href="#">9/5/2023</a>	Word
<a href="#">Ordinance No. 23-39</a>	<a href="#">8/24/2023</a>	<a href="#">9/5/2023</a>	Word
<a href="#">Ordinance No. 23-40</a>	<a href="#">8/24/2023</a>	<a href="#">9/5/2023</a>	Word
<a href="#">Ordinance No. 23-41</a>	<a href="#">8/24/2023</a>	<a href="#">9/5/2023</a>	Word
<a href="#">Ordinance No. 23-42</a>	<a href="#">8/24/2023</a>	<a href="#">9/5/2023</a>	Word
<a href="#">Ordinance No. 23-43</a>	<a href="#">8/24/2023</a>	<a href="#">9/5/2023</a>	Word
<a href="#">Ordinance No. 23-44</a>	<a href="#">8/24/2023</a>	<a href="#">9/5/2023</a>	Word
<a href="#">Ordinance No. 23-45</a>	<a href="#">8/24/2023</a>	<a href="#">9/5/2023</a>	Word
<a href="#">Ordinance No. 23-46</a>	<a href="#">8/24/2023</a>	<a href="#">9/5/2023</a>	Word
<a href="#">Ordinance No. 23-47</a>	<a href="#">8/24/2023</a>	<a href="#">9/5/2023</a>	Word

Ordinance No. 23-49	8/24/2023	9/5/2023	Word
Ordinance No. 23-50	8/24/2023	9/5/2023	Word
Ordinance No. 23-51	8/24/2023	9/5/2023	Word
Ordinance No. 23-52	8/24/2023	9/5/2023	Word
Ordinance No. 23-53	8/24/2023	9/5/2023	Word
Ordinance No. 23-54	8/24/2023	9/5/2023	Word
Ordinance No. 23-55	8/24/2023	9/5/2023	Word
Ordinance No. 23-56	8/24/2023	9/5/2023	Word
Ordinance No. 23-57	8/24/2023	9/5/2023	Word
Ordinance No. 23-58	8/24/2023	9/5/2023	Word
Ordinance No. 23-66	10/5/2023	10/24/2023	PDF
Ordinance No. 23-70	8/17/2023	11/2/2023	Word
Ordinance No. 24-06	1/18/2024	2/2/2024	Word
Ordinance No. 24-12	1/18/2024	2/2/2024	Word



Update the internet version of your Code more often than a printed supplement. We can update the Internet quarterly, monthly, even weekly.



We can post newly enacted ordinances in the online Code after each meeting.